



Metaphysics:, invasive species spread as material traces of human response to the form embodied as a symbol, - a material accesses the unseen...

chemical application timing critical, apply in fall prior to seed set  
foliage application: Triclopyr (3-5 % solution) Glyphosate (1-3% solution)

Repeated operations will be necessary to kill new plants resprouting from roots

**Accidentally Introduced:** Species that dispersed without intentional human intervention, such as contaminants of plant

stock or **planting materials** **Deliberately Introduced:** Species that were (i.e., mulches), or by **attaching** to intentionally transported to and **cultivated**

equipment, shoes, or animals in new areas for various purposes such as livestock forage, erosion control, or ornamental horticulture, but then subsequently spread into areas where they are unwanted

woody twining vine with compound leaflets in alternating pairs



## TENDS TO BECOME WEEDY & INVASIVE WHERE INTRODUCED

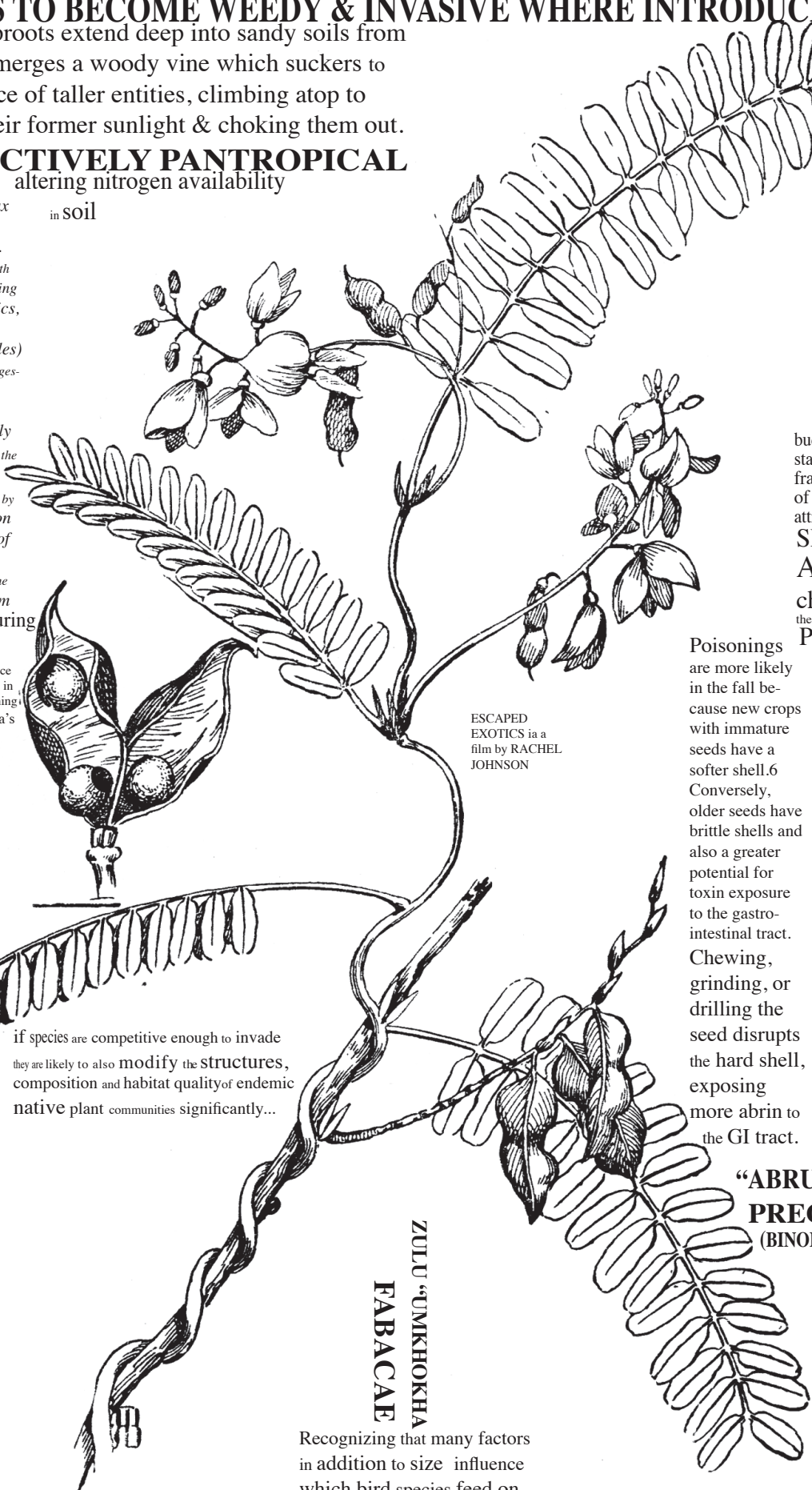
Long taproots extend deep into sandy soils from which emerges a woody vine which suckers to the surface of taller entities, climbing atop to reach their former sunlight & choking them out.

## EFFECTIVELY PANTROPICAL

resulting altering nitrogen availability in soil

ecological flux remains both material (i.e. concurrent with our understanding of rules of physics, chemistry... biological rules) although changes- can still be understood metaphysically as actions on the level of the intent inspired by desire for union with the realm of dreams/ effect processes in the material realm naturally occurring

fires caused by lightning once played a major role in forming, maintaining much of Florida's pinelands, sandhills, scrub areas, prairies and wetlands

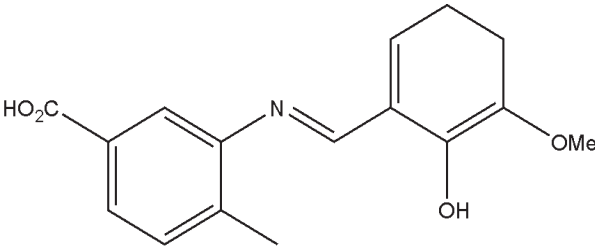


ESCAPED EXOTICS ia a film by RACHEL JOHNSON

Poisonings are more likely in the fall because new crops with immature seeds have a softer shell.<sup>6</sup> Conversely, older seeds have brittle shells and also a greater potential for toxin exposure to the gastro-intestinal tract. Chewing, grinding, or drilling the seed disrupts the hard shell, exposing more abrin to the GI tract.

buds erupt from stalk terminus in OCTOBER of Native regions or in Florida (invasive) in more rapid sucession with less and less regard to season. SEEDS CONTAIN HIGHEST CONCENTRATION OF ABRIN A TOXIN WITH structure similar to snake venom, ricin, botulinum, cholera and diphtheria toxins.<sup>1</sup> The B chain facilitates binding to cell surface receptors, allowing the entry of the A chain into cells.<sup>4</sup> The A chain acts on the 60S ribosome to inhibit EF-1 and EF-2.<sup>2</sup> Prevents protein synthesis causes cell death

estimated (human) fatal dose of Abrin 0.1-1 µg/



### EMETIC CONVULSION BLINDNESS

Chirmi Mhari Chirmali – 2  
Chirmi ra -2  
Chirmi ra Daala Char Bholi Mhari Re – 2  
Chirmi Babo Sari Ladali – 2  
Ba To Motiya Beechali Lal, Vari Jaun Chirmi Ne -2  
Chirmi Mavasa Ri Ladali – 2  
Wato Kalajiye Kor Bholi Mhari Chirmi Re -2  
Unchale Daale Meh Chadha – 2  
Mhare Nichale Daale Jeth, Vari Jaun Chirmi Re  
Utaru Jeth Ji Main Chadha – 2  
Koi Jou Mhare Baba Sari Baath, Bholi Mhari Chirmi Re – 2  
Chirmi dancers traditionally perform balancing a “matka” traditional clay pot headdress lit by flame, upon their head  
Chadhti Ne Dikhe Medto – 2  
Utarti Ne Ajmer, Vari Jau Chirmi Ne  
Chadhti Ro Chamke Chudalo – 2  
Utarti Ro Nosar Haar, Bholi Mhari Chirmi Re – 2

Babo Sa Ra Chadhlya Ghodalyo – 2  
Mhare Beero Sa Re Chadhba Taur, Bholi Mhari Chirmi Re  
Ghudale Re Bandhan Ghughara – 2  
Koi Torad Bandhan Loom, Vari Jau Chirmi Re – 2.  
In the song, the married girl is saying “my chirmi tree is very innocent. I climbed on the tree to see coming my father but my jeth (husband ‘s elder brother) also climbed up on the tree then chirmi tree’s branches urned broken. That married girl requests her jeth to get down from chirmi and saying “My father is coming rode on horse and brother is riding on a camel. The horse is decorated with ghoongra (small bells) and the camel with loom (a type of decorative threads). The small bells gets rusted and the decorative threads gets dirt. So I will keep those bells in a purse and hang those threads on a hanger. I will wash those bells with curd and dust out those decorative threads. A significant part of Rajasthani music and culture.

## “ABRUS PRECATORIUS L. (BINOMIAL NOMENCLATURE)



during the time of LINNAEUS Europeans imported seeds from India for use in counting the prayers of the ROSARY

### “JUMBIE-JUMBIE” TRINIDAD “GIDEE-GIDEE” &TOBAGO

seeds protect the wearer from MAL-YEUX ( THE EVIL EYE) strung around wristsand ankles to ward-off Jumbie- Jumbies or Evil Spirits

seeds constitute base unit of a traditional system of currency used since ancient times as measurement for gold or jewels due to seeds’ rare uniformity of weight. Abrus seeds also used by the Chamàr or “Native Skinner” caste to carry out the felonious poisoning of cattle for the purpose of securing hides using small spikes called sui (needles) or sutari (awls) prepared by soaking the awl in a thin paste of the water-soaked, pounded seeds, drying the weapon in the sun, oiling it and sharpening it upon stone, affixed in a handle- then used to puncture the skin of the cow so that cause of death goes undetected. killers were punished by transportation for life.

### “RATTI” (HINDI)

seeds constitute base unit of a traditional system of currency used since ancient times as measurement for gold or jewels due to seeds’ rare uniformity of weight. Abrus seeds also used by the Chamàr or “Native Skinner” caste to carry out the felonious poisoning of cattle for the purpose of securing hides using small spikes called sui (needles) or sutari (awls) prepared by soaking the awl in a thin paste of the water-soaked, pounded seeds, drying the weapon in the sun, oiling it and sharpening it upon stone, affixed in a handle- then used to puncture the skin of the cow so that cause of death goes undetected. killers were punished by transportation for life.

there fore 1 RATTI = 1216 g or 8 barleycorns = 4 rice seeds

### “CHIRMI” (RAJASTAN) REGION OF SPECIES ORIGIN

symbol of innocence, brides, protects from ill will. Chirmi is a game played by children- subject of a traditional Rajasthani folk melody and dance performed by women as a key regional standard symbolize Goddess Lakshmi and it is said that the wearer is blessed with wealth, prosperity and harmony. naturally grown beads are found in forest of Aravalee mountains, India and are believed to be many hundred years old Since the goddess of wealth stays near beads they should be kept in lockers, money safe, cash box, altar, handbag, purse.

Seeds are commonly said to pick their beholder and will not stay with an unlucky person .

Seeds of rosary pea (Abrus precatorius) are unusual in that they are mimetic, a trait shared with the native coral bean (Erythrina her- bacea). The glossy seeds are bright red, and not sur- rounded by pulp or skin. Instead, they mimic fleshy- pulped fruits in a game of deception, taking advantage of frugivorous birds to disperse seeds with no compensatory reward.

From Oneco, Fla. Received through the firm of Rensoner Brothers, July 8, 1901. A collection of ornamental and economic plants (nomenclature is in the main that of the nurserymen):

6851. ABERIA CAFFRA.	Kei apple.
6852. ANACARDIUM OCCIDENTALE.	Cashew.
6853. ANONA MURICATA.	Sour sop.
6875. ZINGIBER OFFICINALE.	Ginger.
6876. CUPRESSUS FUNEBRIS.	Funeral cypress.
6877. ABRUS PRECATORIUS.	Crab's eye vine.

MORPHOLOGY many wildlife species came to depend on the nourishing vegetation that burst from fire-enriched soils

LIANE RÉGLISSE AKAR SAGA PEPITIO WEATHER PLANT XIANG SI ZI TOAZUKI Ndé blé ni Cam thảo dây Chasnekhathosh ojos de cangrejo pukawé anything of foreign origin, something not of native growth, as a plant, a word, a custom is exotic says Webster's Revised Unabridged Dictionary (1913). A plant that is native to another part of the world but has been introduced here is known as exotic. While the plant Abrus is indigenous the word Carat is exotic. The saga of an indigenous name becoming an exotic is hidden in the unwritten history. (Dr. V. Sankaran Nair)

LOVE PEA CRAB'S EYE TENTO MUJDO WILD LICORICE

APHRODISIAC ABORTION CONTRACEPTIVE COUGH HAIR GROWTH SNAKE BITE

& occurs in hilly regions